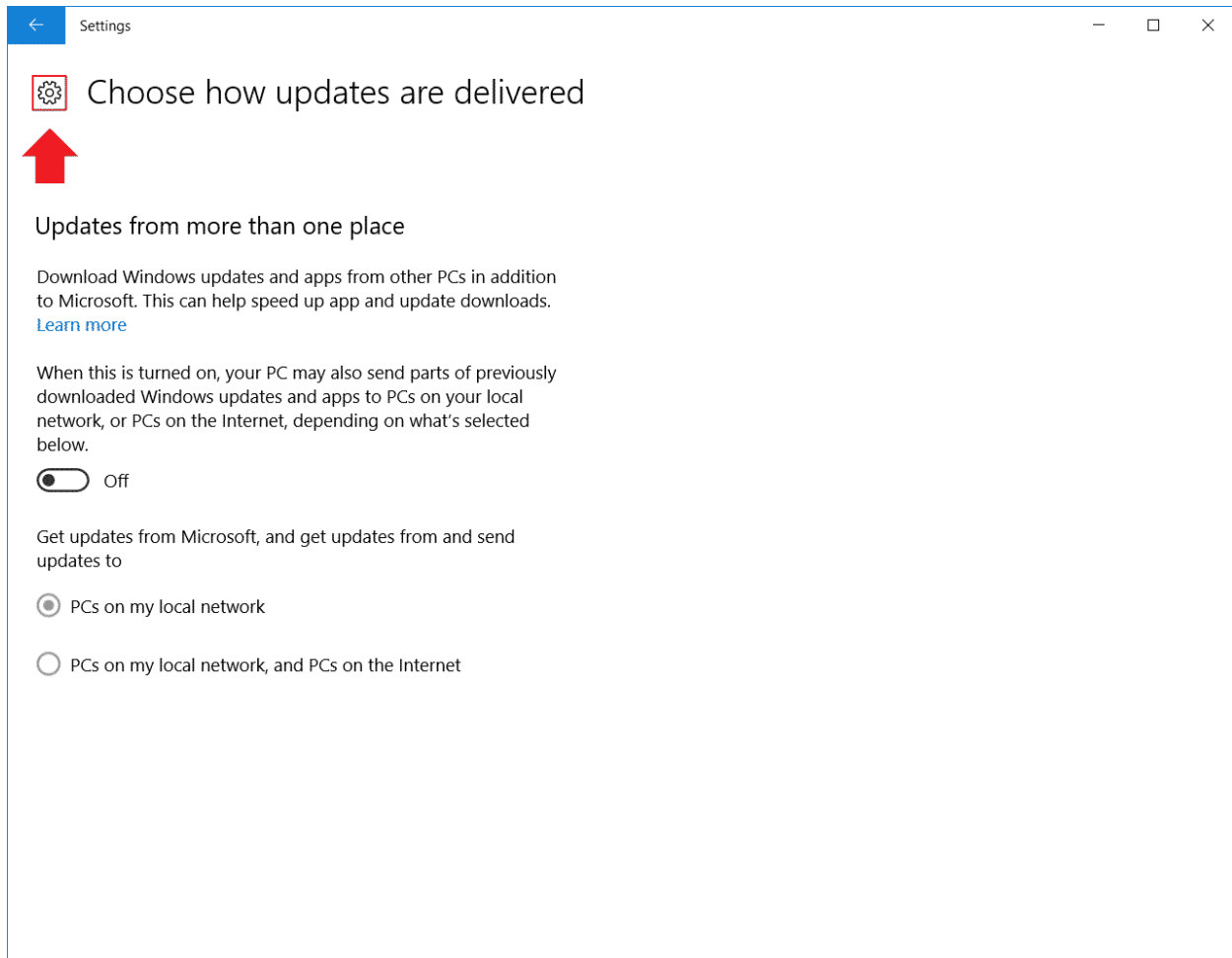


Complete the following steps to configure general privacy settings on your computer.

General Privacy Settings

1. Return to the settings menu by clicking on the “Settings” gear.



The screenshot shows a Windows Settings window titled "Settings". The main heading is "Choose how updates are delivered", with a red arrow pointing to the gear icon. Below this, the section "Updates from more than one place" is shown, which is currently turned off. The text explains that this feature allows downloading updates from other PCs and sending parts of updates to other PCs on the local network or the Internet. The "Off" toggle is visible. Underneath, there are two radio button options: "PCs on my local network" (which is selected) and "PCs on my local network, and PCs on the Internet".

Settings

Choose how updates are delivered

Updates from more than one place

Download Windows updates and apps from other PCs in addition to Microsoft. This can help speed up app and update downloads. [Learn more](#)

When this is turned on, your PC may also send parts of previously downloaded Windows updates and apps to PCs on your local network, or PCs on the Internet, depending on what's selected below.

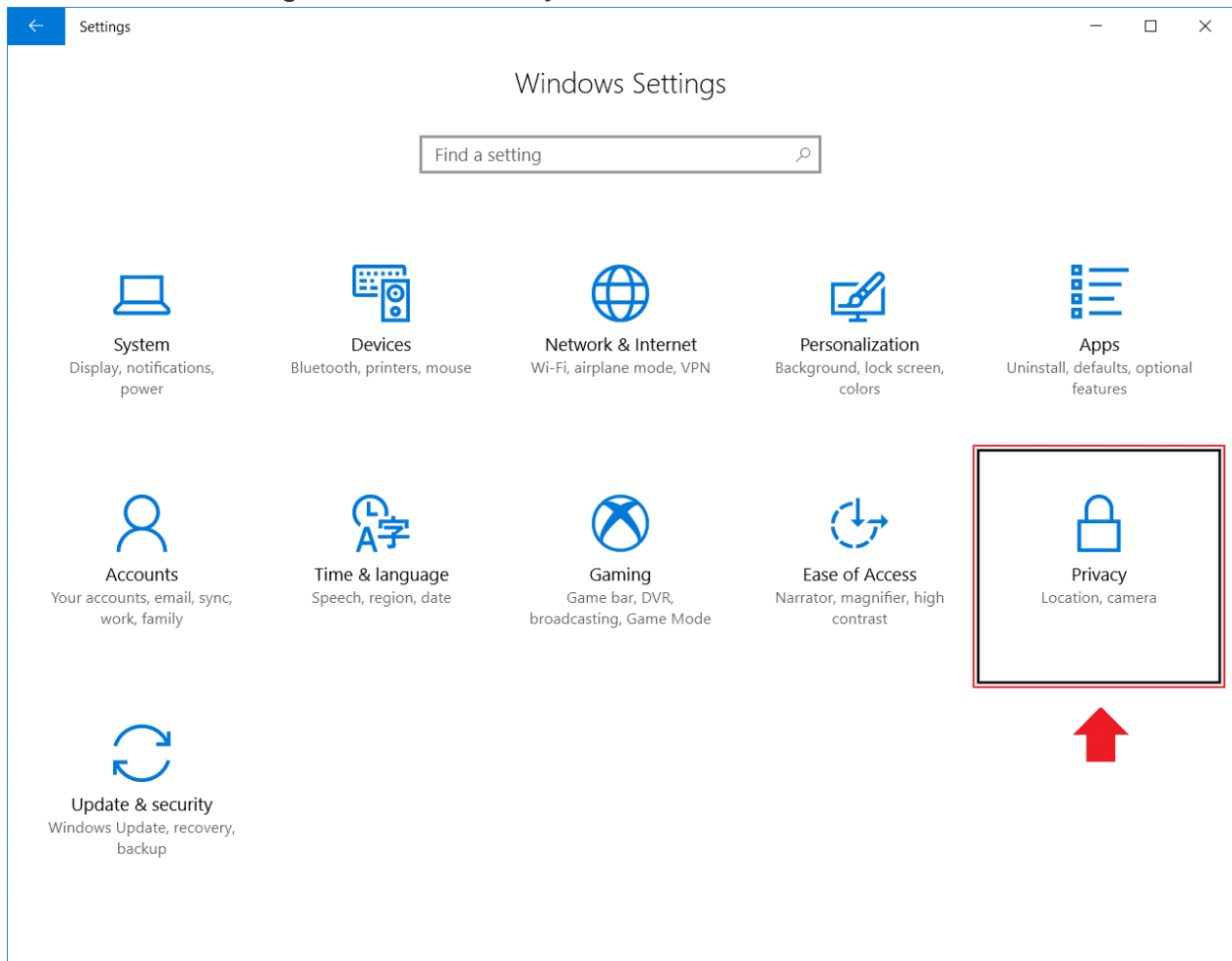
Off

Get updates from Microsoft, and get updates from and send updates to

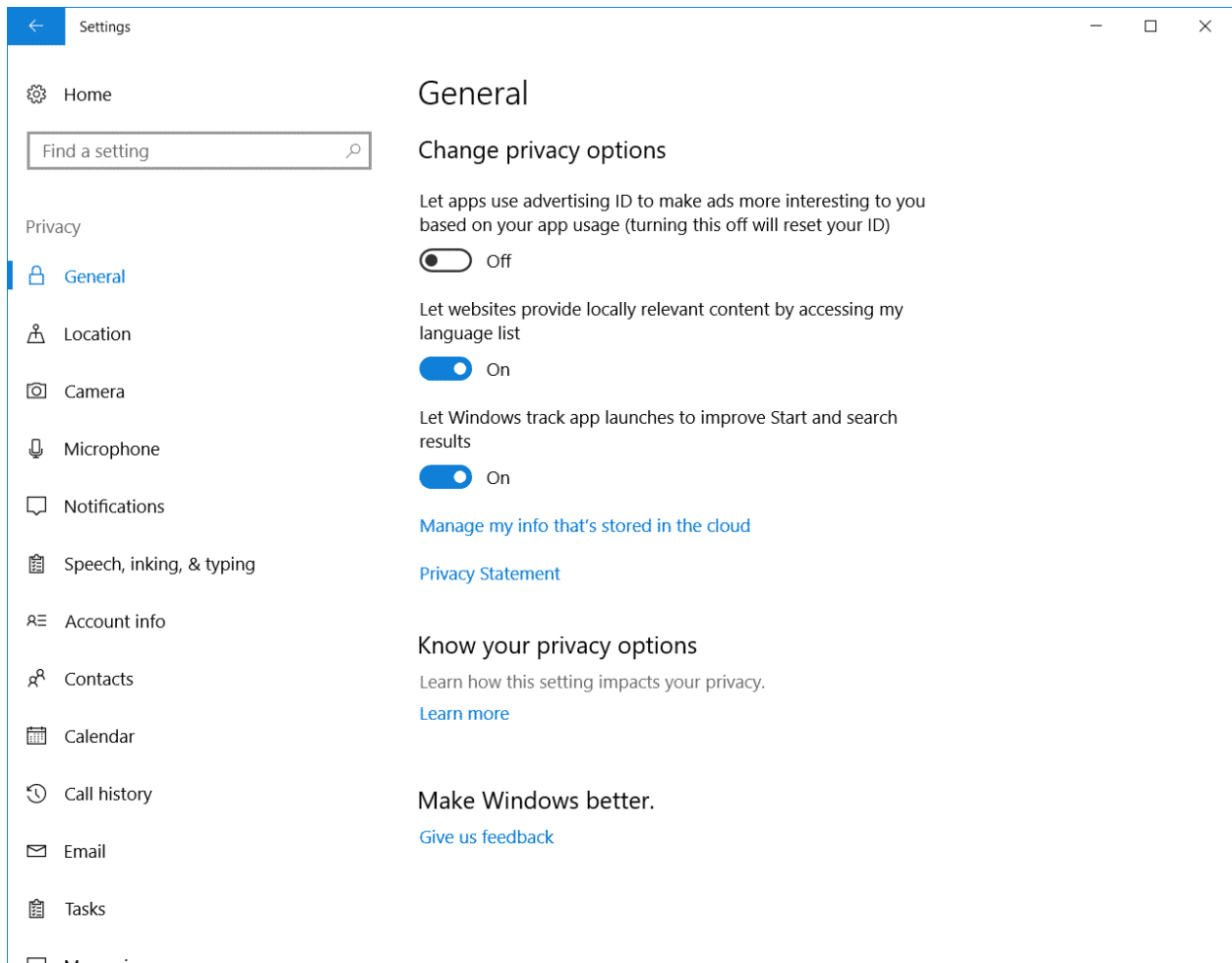
PCs on my local network

PCs on my local network, and PCs on the Internet

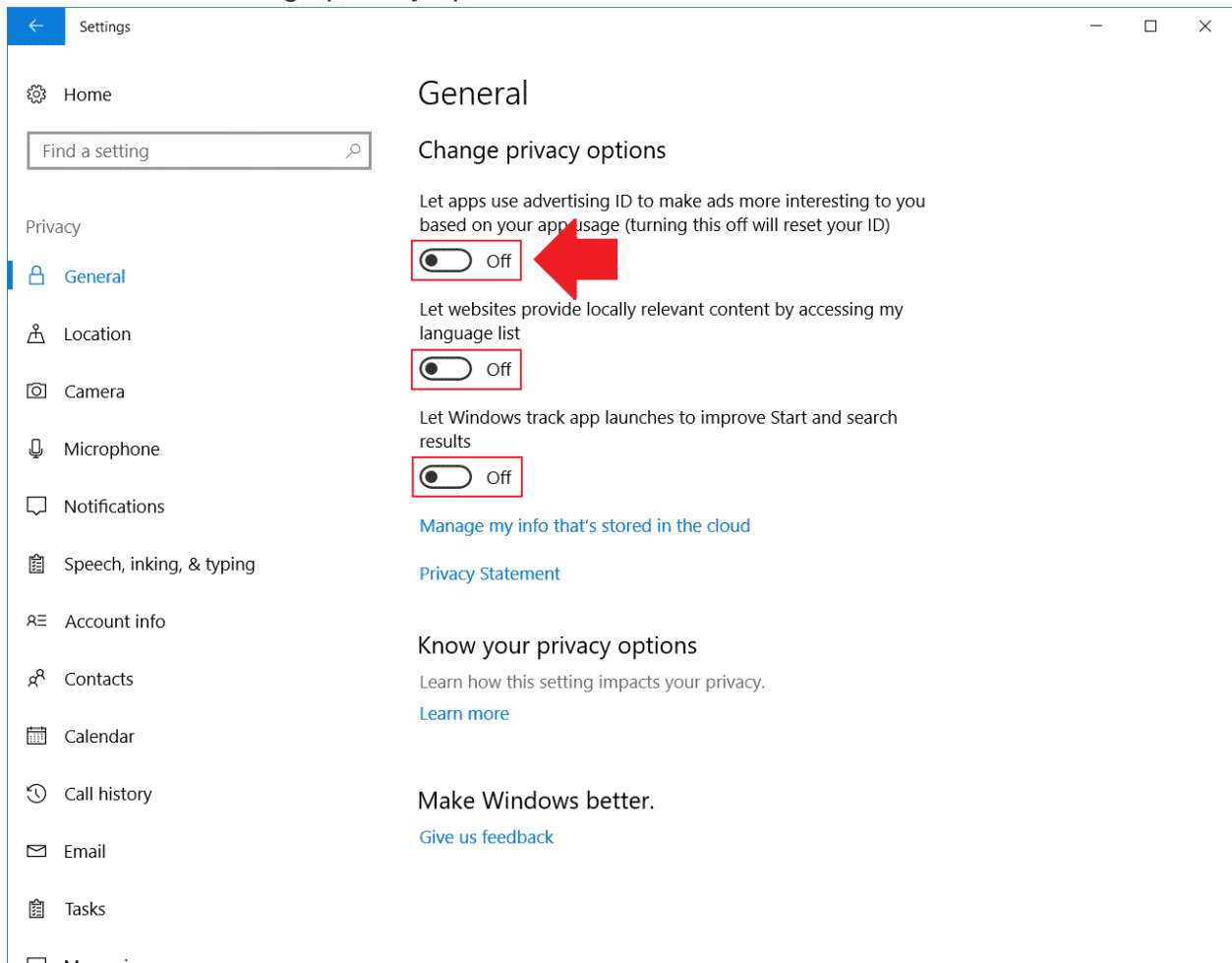
2. In the main settings, click on “Privacy”.



3. Click on General tab.

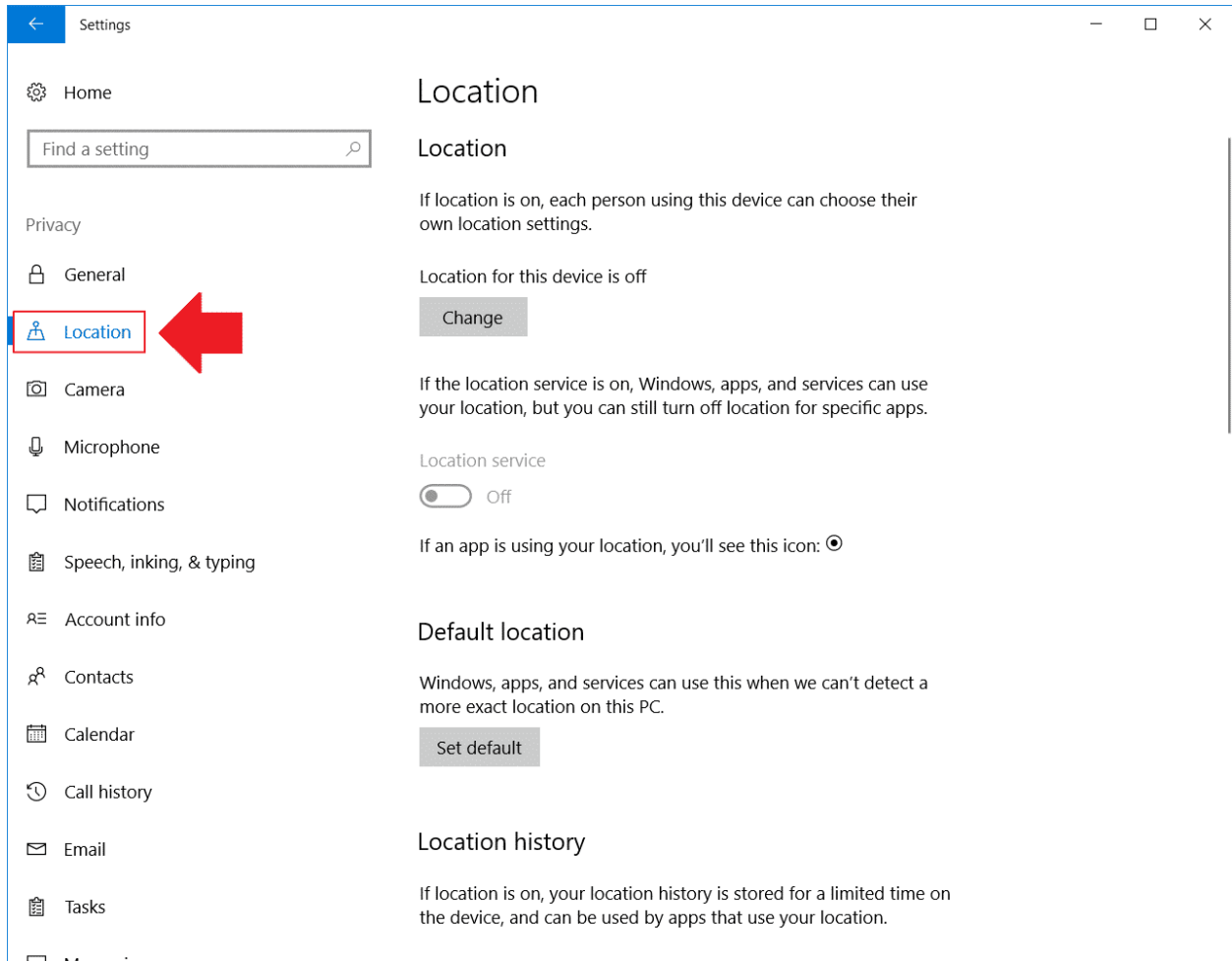


4. Turn off all “Change privacy options”.

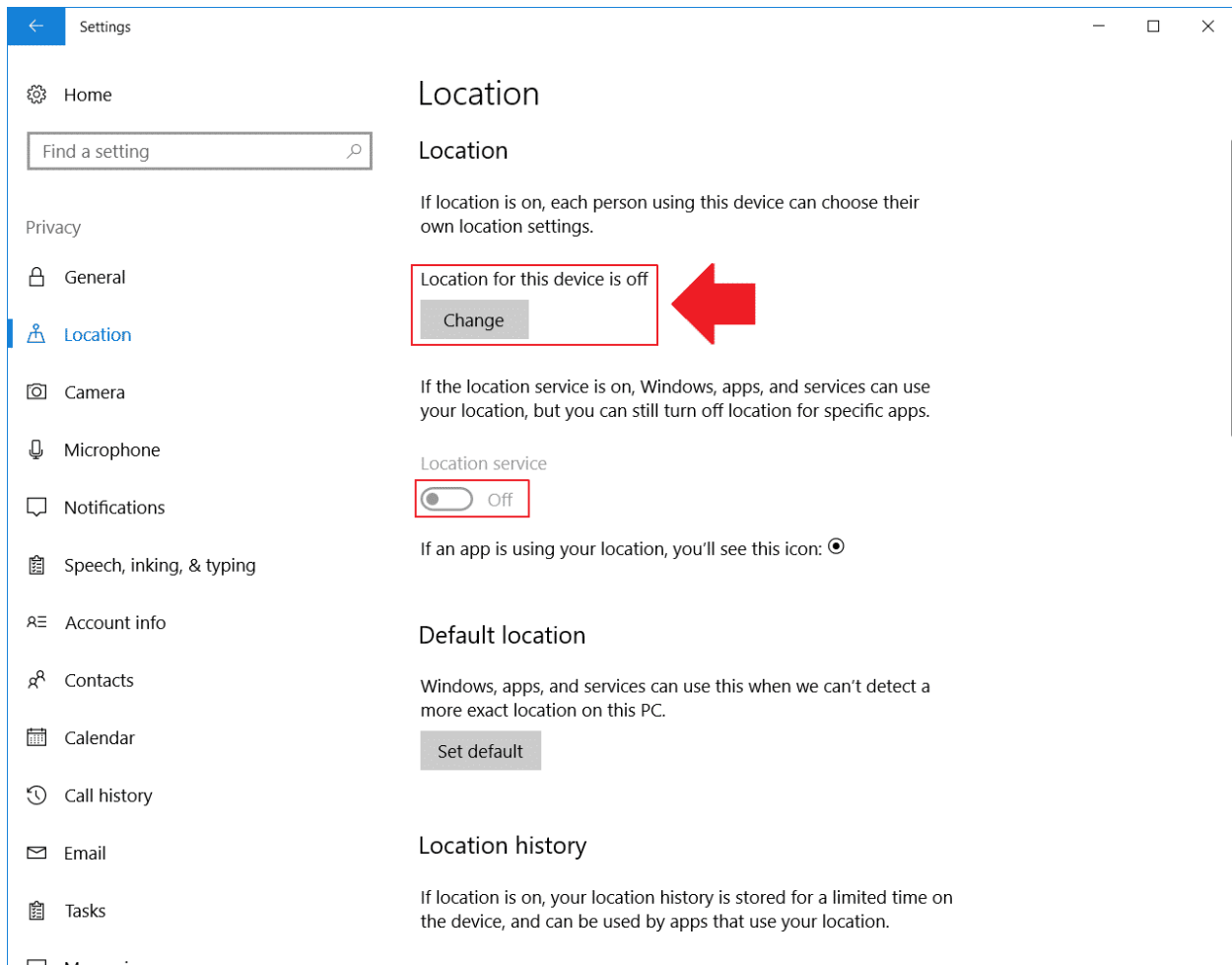


Location Privacy Settings

1. Click on the "Location" options.



2. Ensure that it reads “Location for this device is off”.



Settings

Home


Find a setting

Privacy

- General
- Location**
- Camera
- Microphone
- Notifications
- Speech, inking, & typing
- Account info
- Contacts
- Calendar
- Call history
- Email
- Tasks
- Messaging

Location

If location is on, each person using this device can choose their own location settings.


Location for this device is off 

Change

If the location service is on, Windows, apps, and services can use your location, but you can still turn off location for specific apps.

Location service

Off

If an app is using your location, you'll see this icon: 

Default location

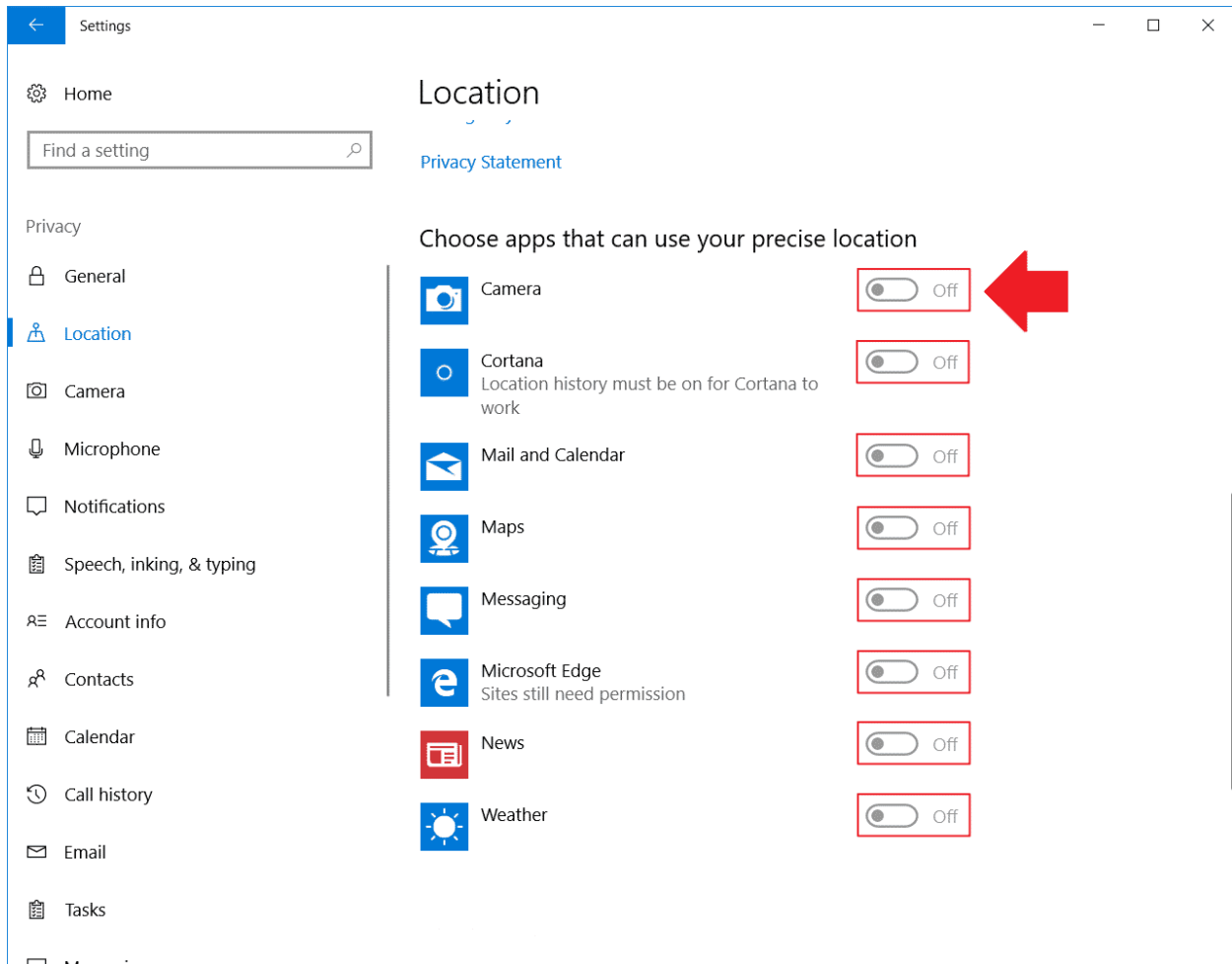
Windows, apps, and services can use this when we can't detect a more exact location on this PC.

Set default

Location history

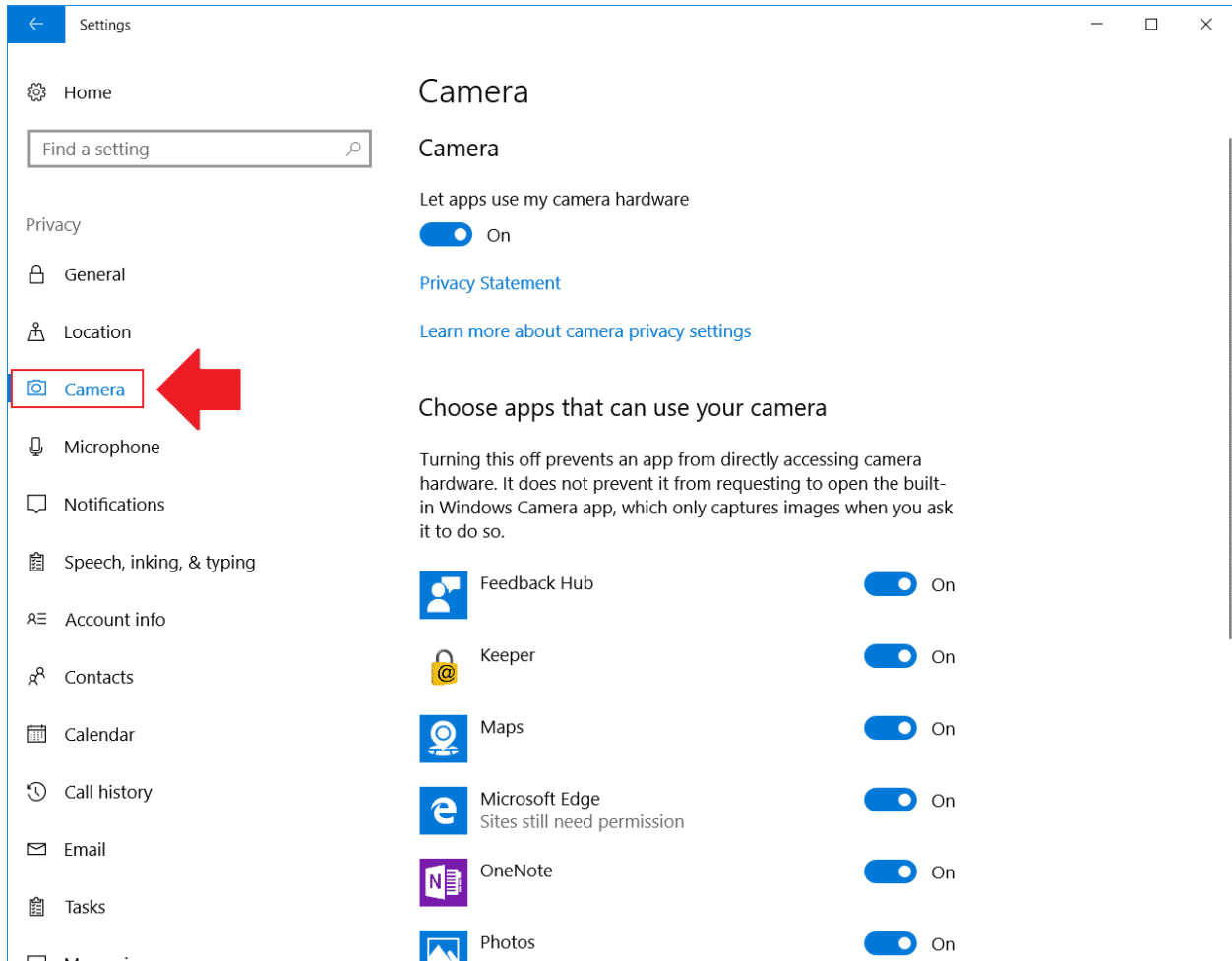
If location is on, your location history is stored for a limited time on the device, and can be used by apps that use your location.

3. Scroll Down and ensure that apps under “choose the apps that can use your precise location” are off.

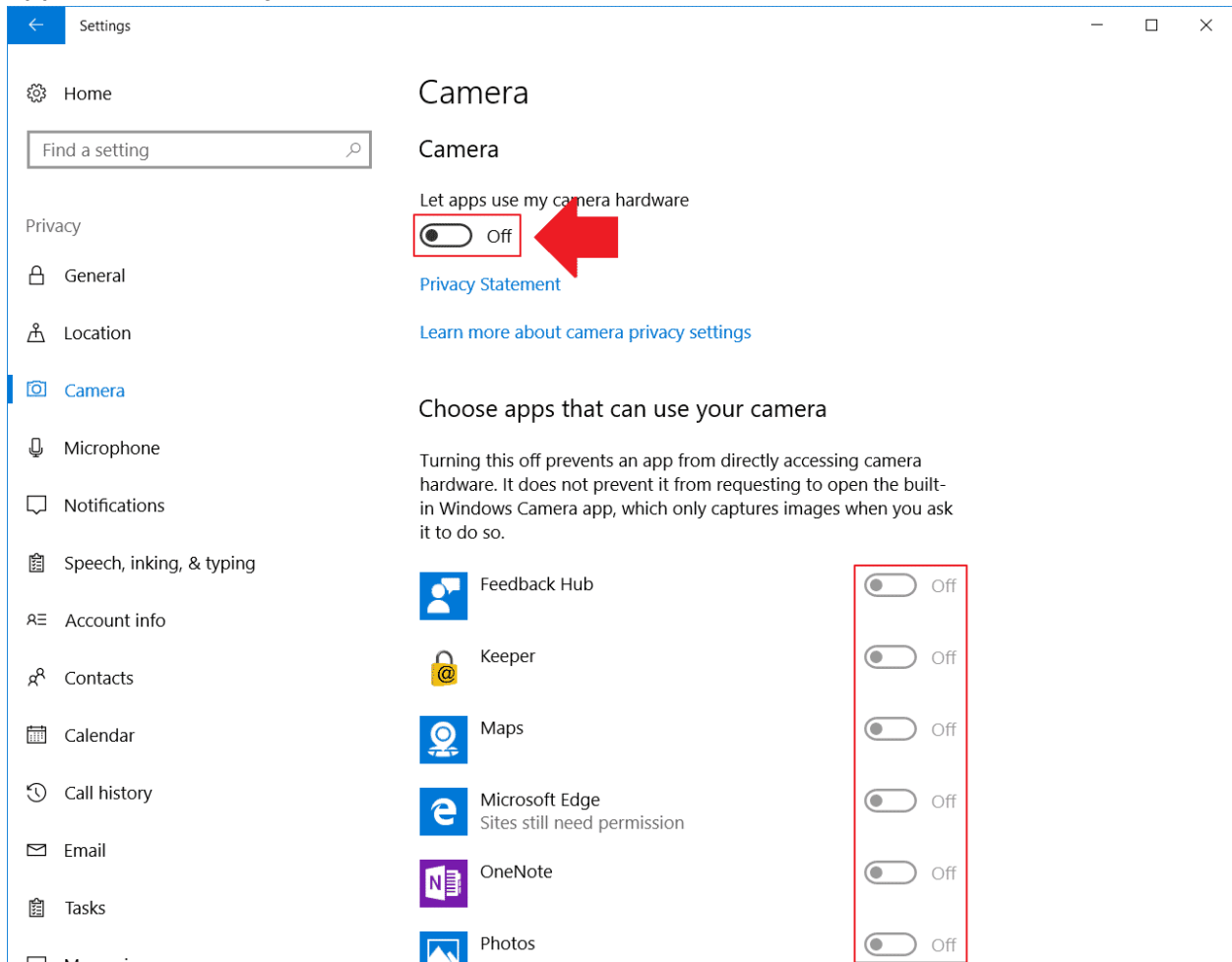


Camera Privacy Settings

1. Click on the camera options.

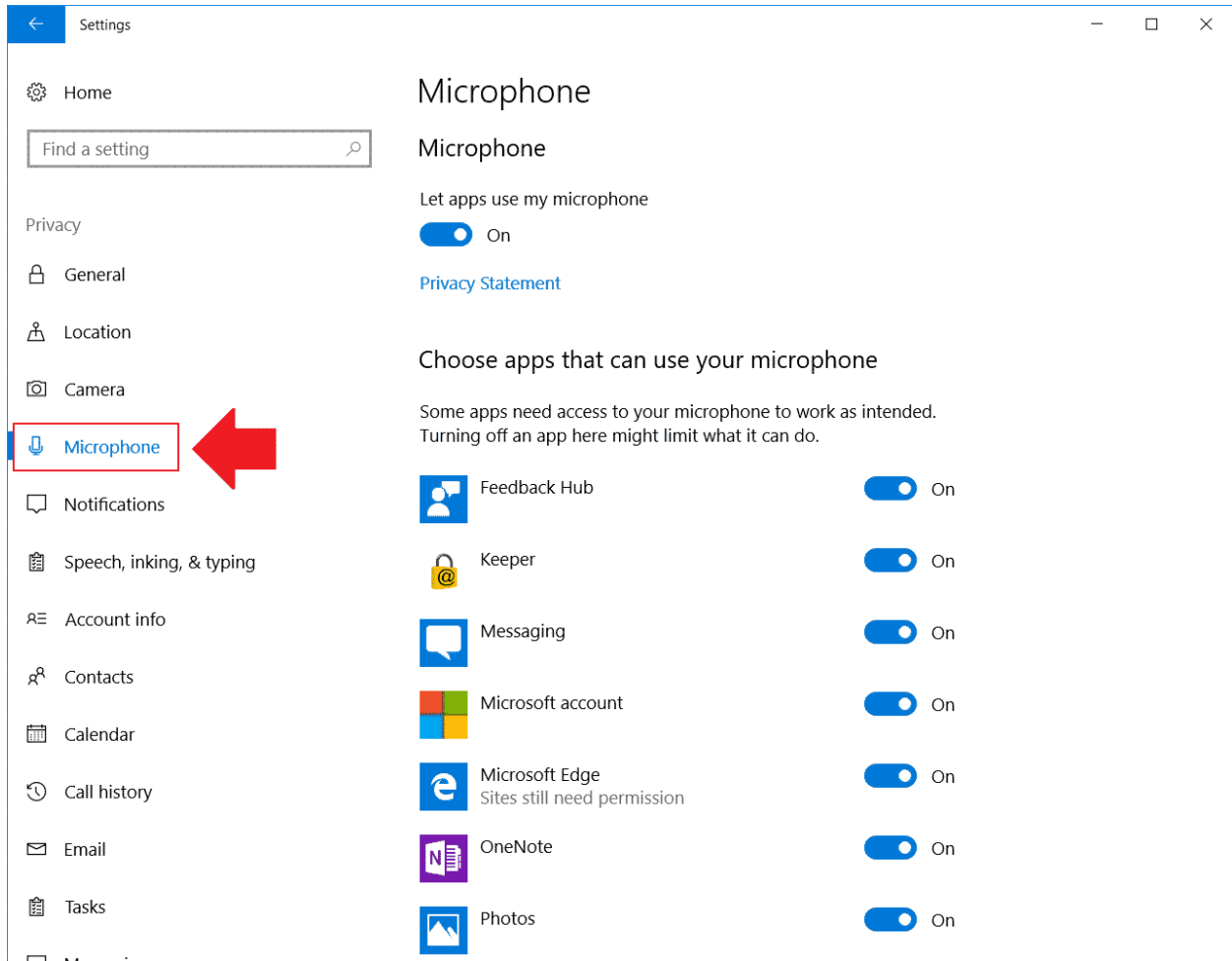


2. Turn off “Let apps use my camera hardware” and ensure that apps under “choose the apps that can use your camera” are off.

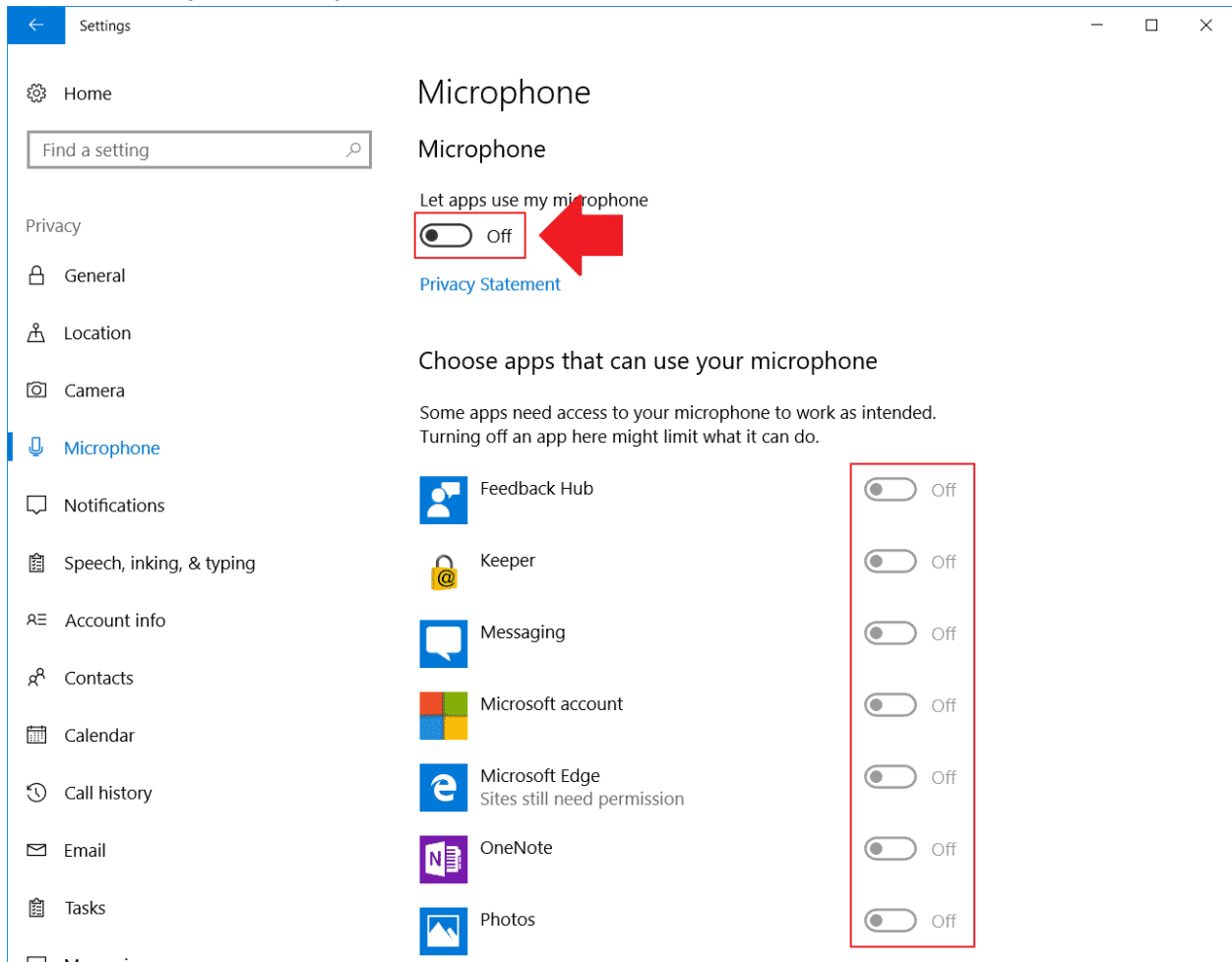


Microphone Privacy Settings

1. Click on the Microphone Settings.

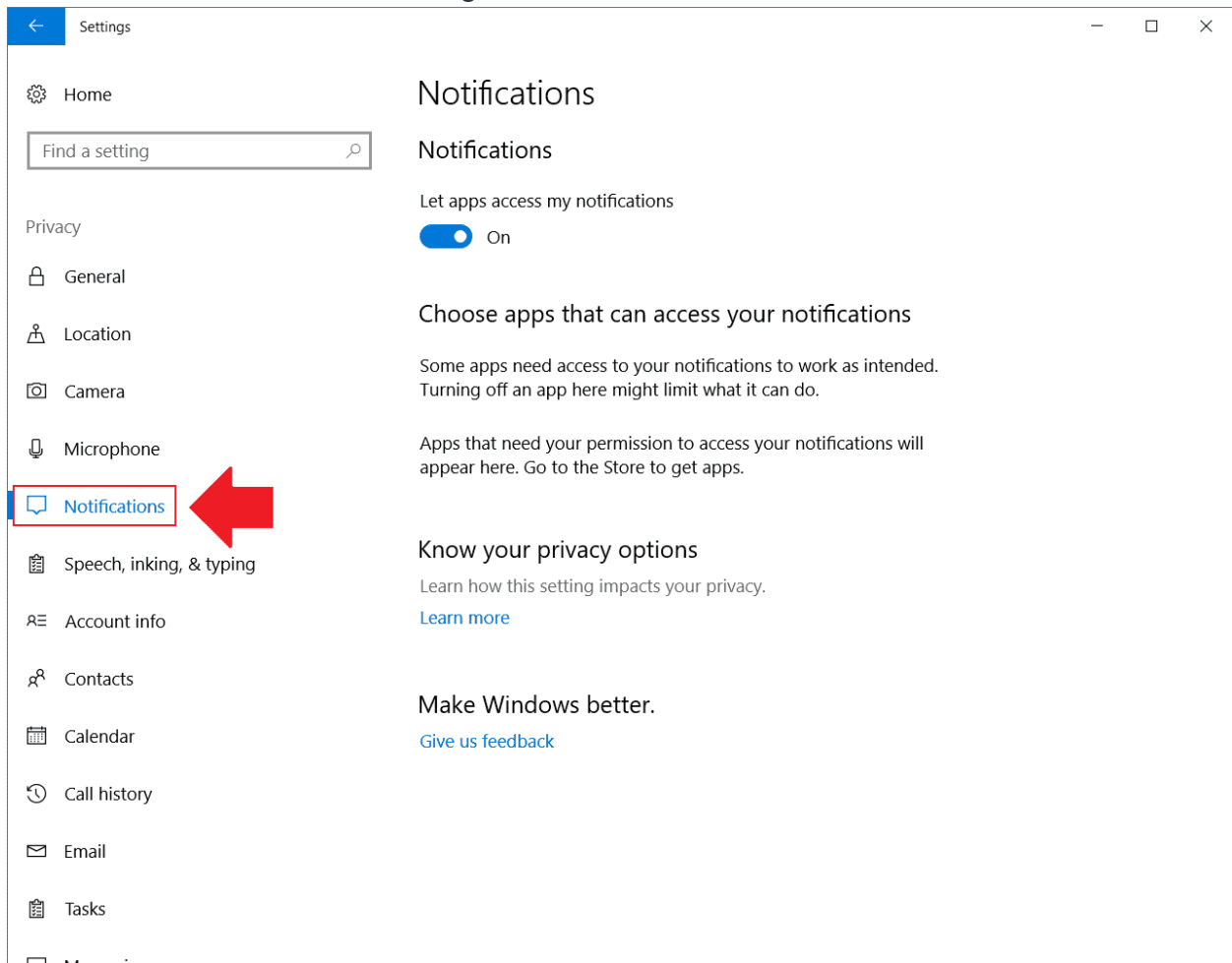


2. Turn off “Let apps use my microphone” and ensure that apps under “choose the apps that can use your microphone” are off.

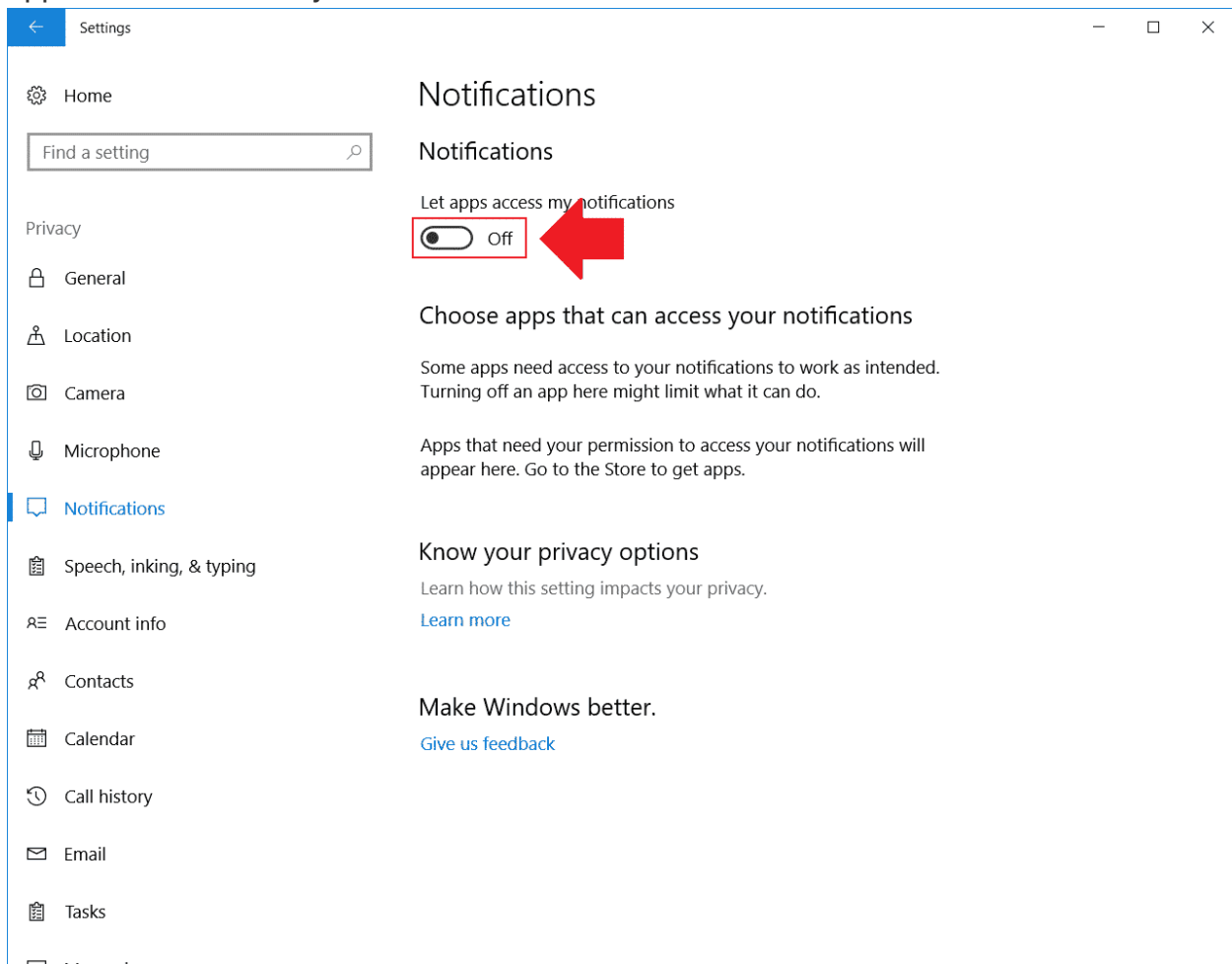


Notification Privacy Settings

1. Click on the Notification Settings.



2. Turn off “Let apps access my notifications” and ensure that apps under “choose the apps that can access your notifications” are off.



You have completed the General Privacy settings on your computer. Please click on the “COMPLETE LESSON” button below to indicate that you have completed this lesson so you can go to the next lesson.