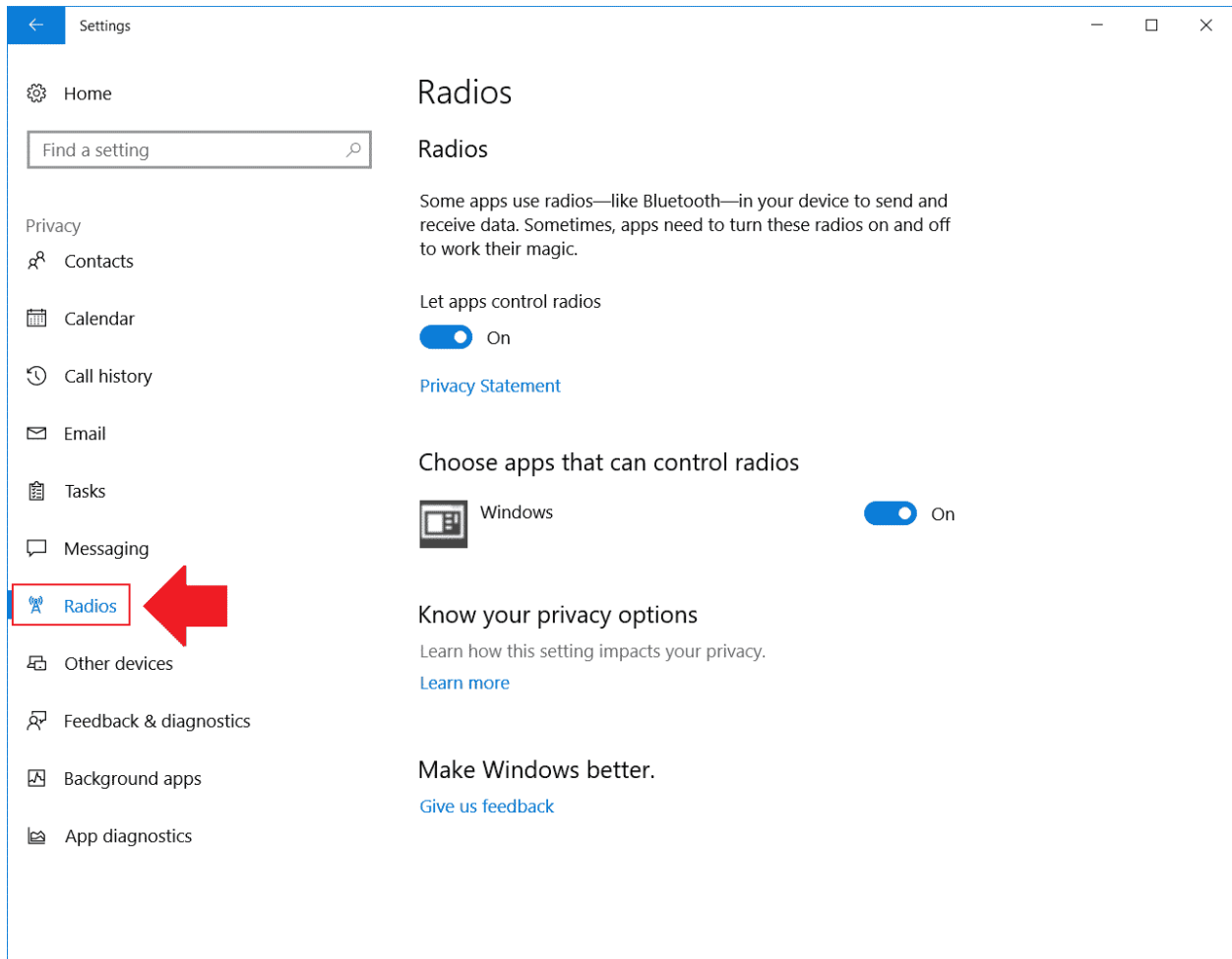


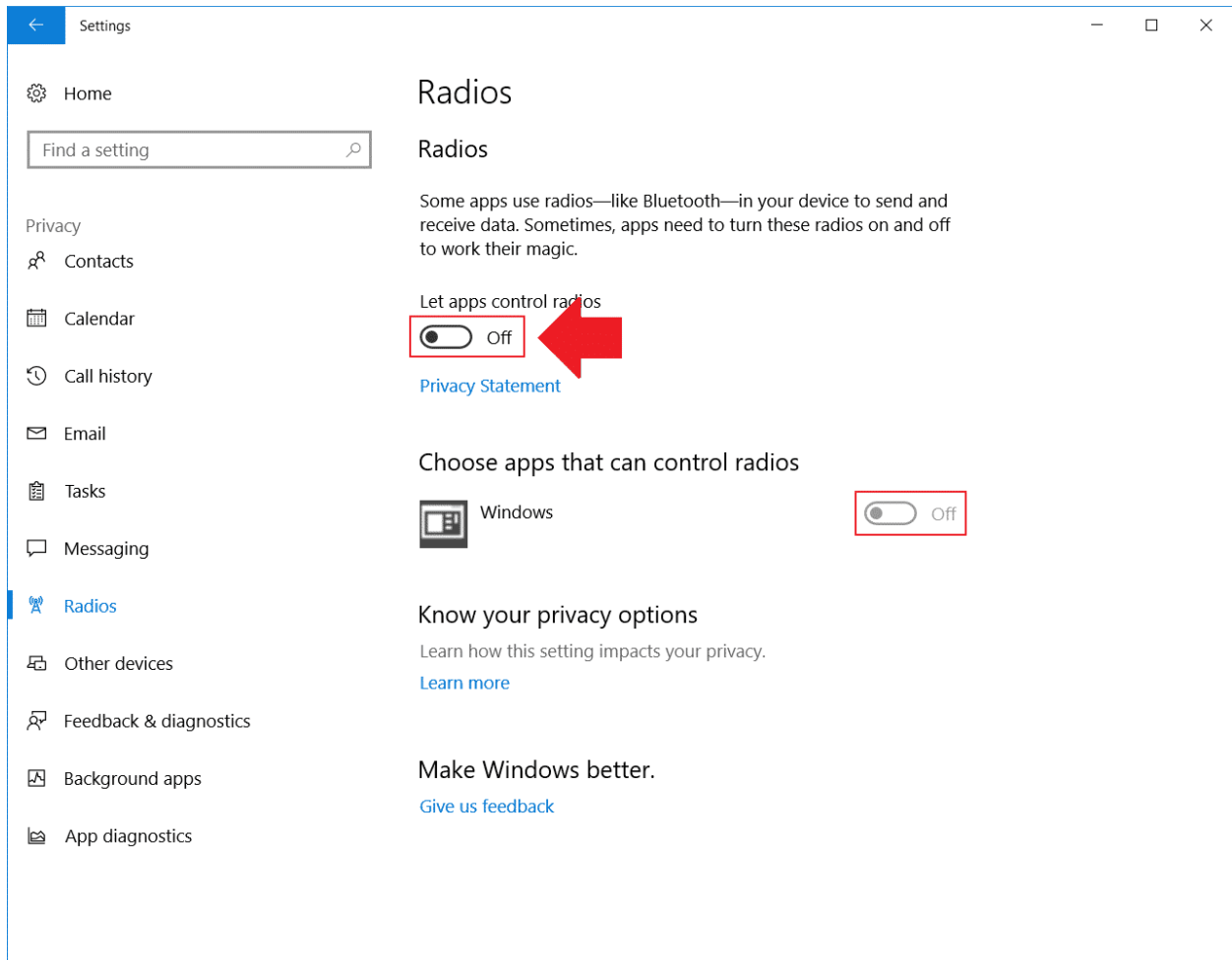
Complete the following steps to configure devices and app privacy settings on your computer.

Radio Privacy Settings

1. Click on Radios.

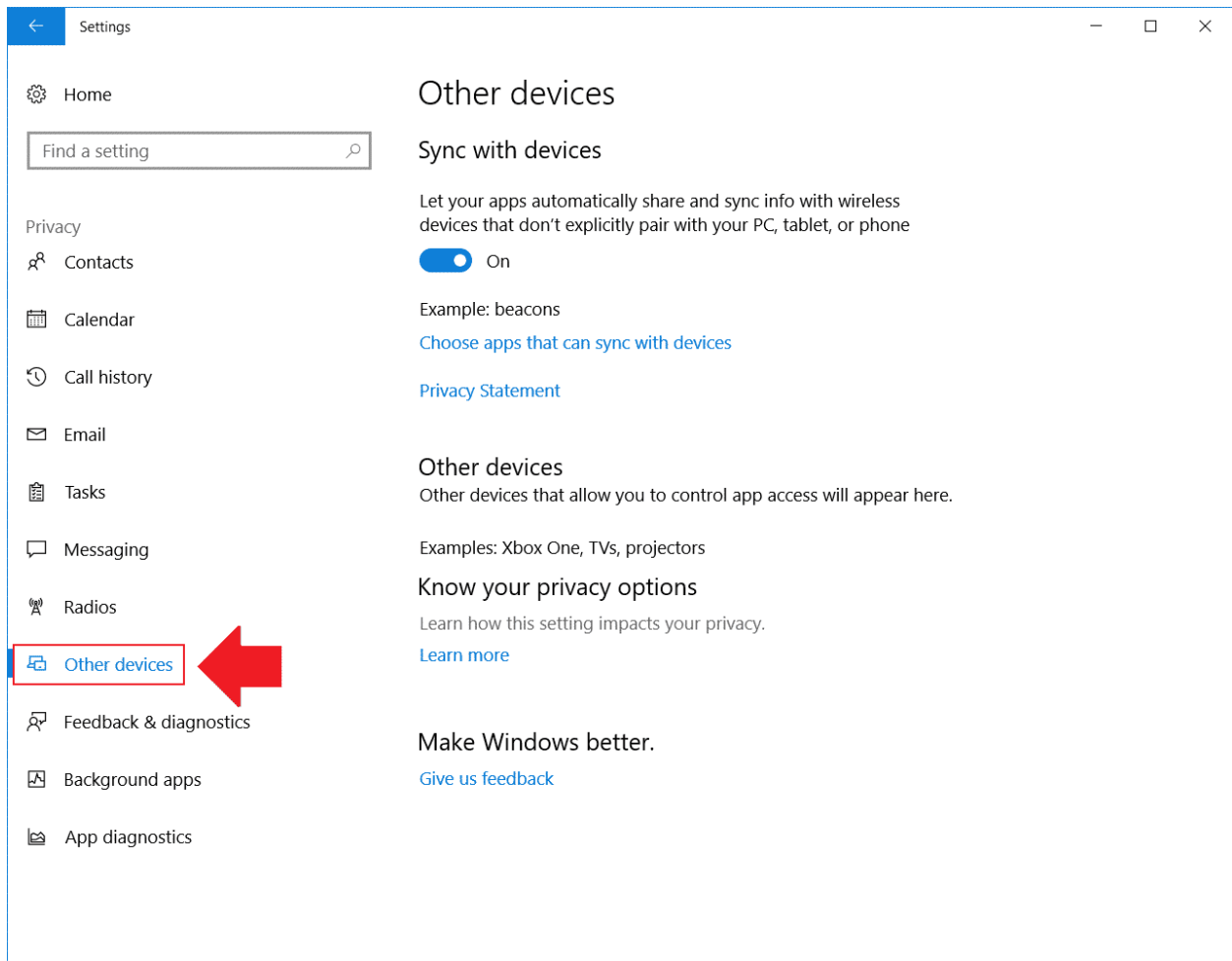


2. Turn off “Let apps control radios” and ensure that apps under “choose the apps that can control radios” are off.



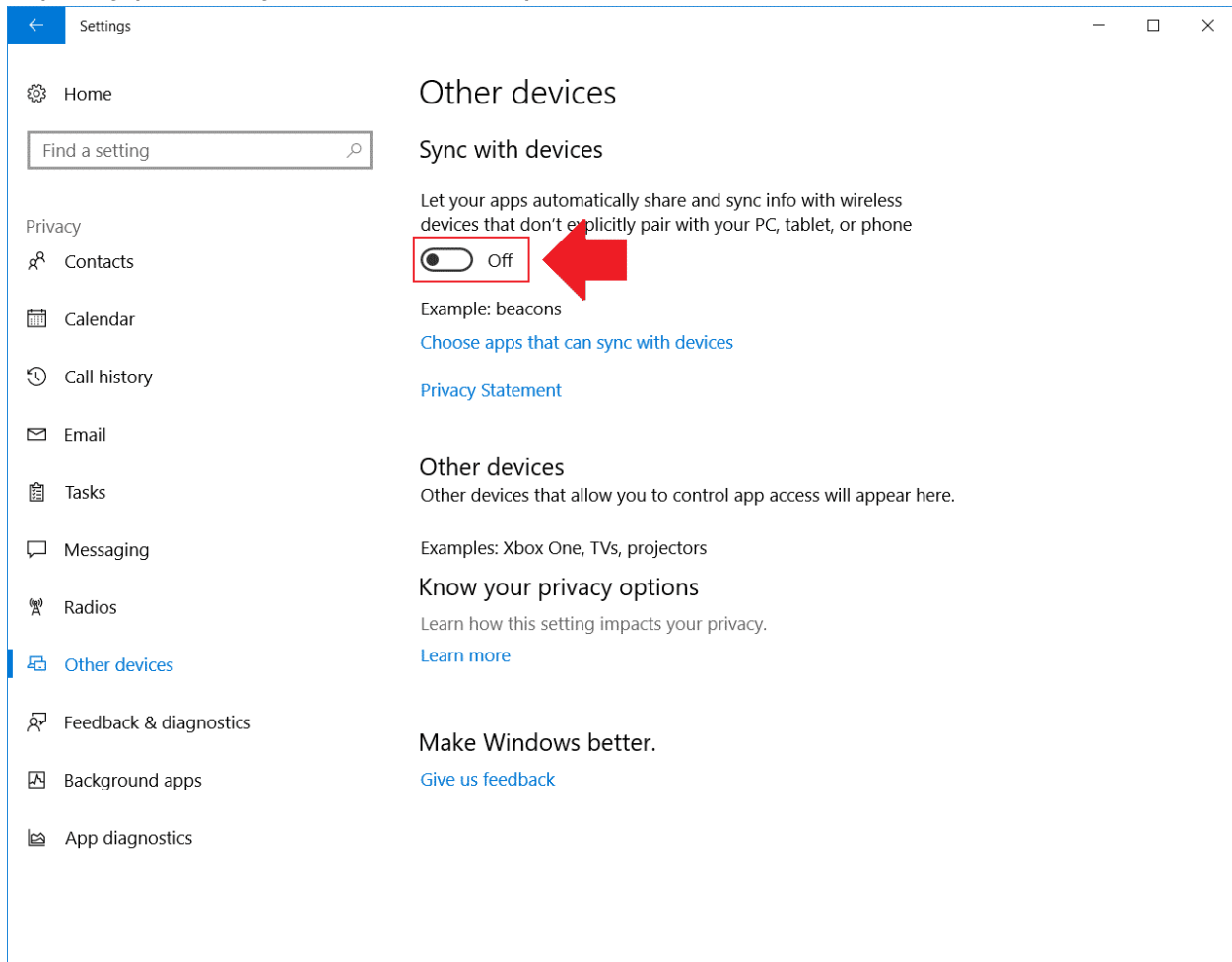
Other Devices Privacy Settings

1. Click on Other devices.



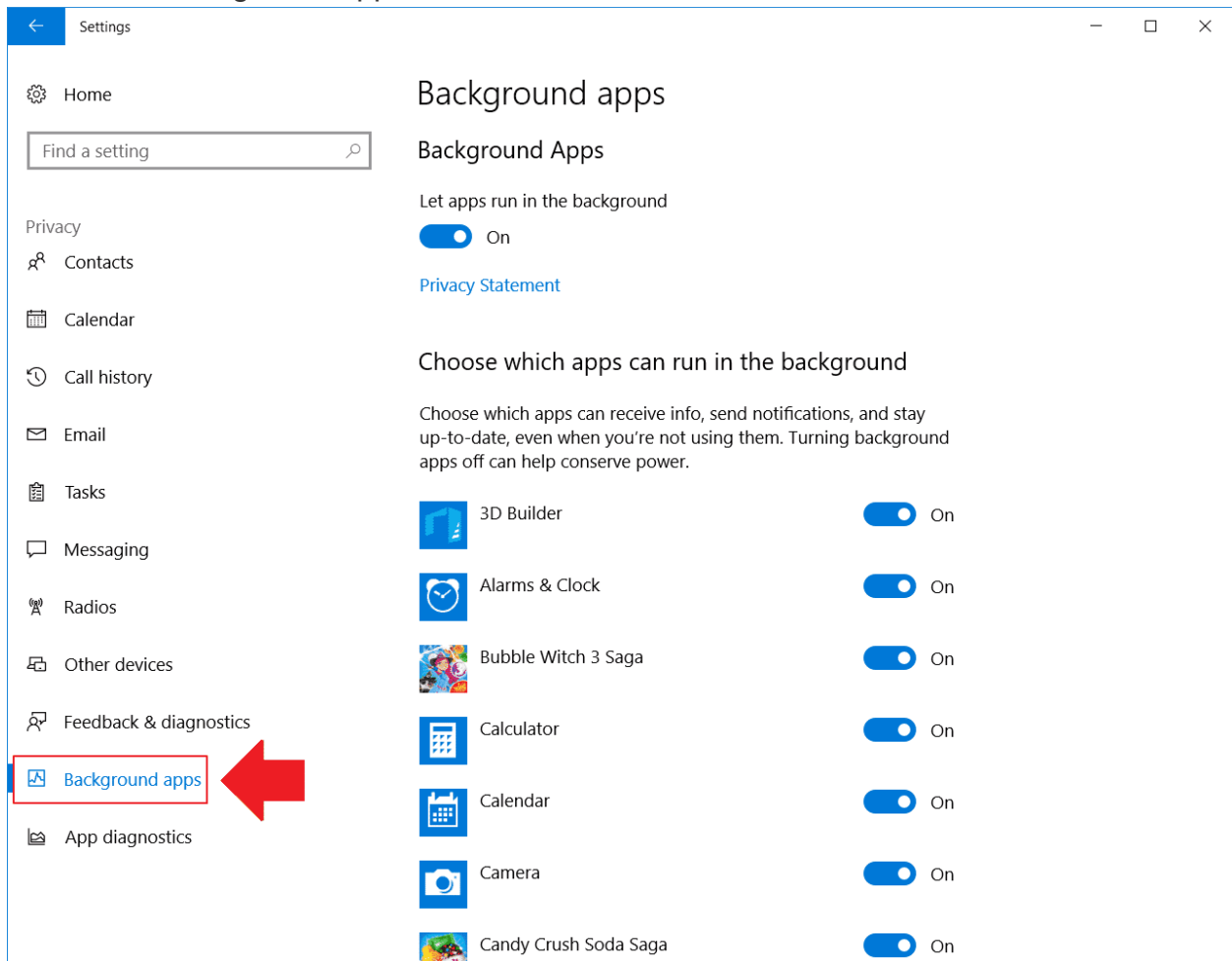
The screenshot shows the Windows Settings application. The title bar at the top reads "Settings" and includes standard window controls (minimize, maximize, close). On the left side, there is a navigation pane with a "Home" button at the top and a search box labeled "Find a setting". Below the search box, several settings categories are listed: Privacy, Contacts, Calendar, Call history, Email, Tasks, Messaging, Radios, Other devices, Feedback & diagnostics, Background apps, and App diagnostics. The "Other devices" option is highlighted with a red rectangular box, and a large red arrow points from the right towards this box. The main content area on the right is titled "Other devices" and contains the following text: "Sync with devices" (with a toggle switch set to "On"), "Let your apps automatically share and sync info with wireless devices that don't explicitly pair with your PC, tablet, or phone", "Example: beacons", a link "Choose apps that can sync with devices", and a link "Privacy Statement". Below this, there is another section titled "Other devices" with the text "Other devices that allow you to control app access will appear here." and "Examples: Xbox One, TVs, projectors". This is followed by "Know your privacy options" and a link "Learn more". At the bottom, there is a section "Make Windows better." with a link "Give us feedback".

2. Turn off “Let apps automatically share and sync info with wireless devices that don’t explicitly pair with your PC, tablet, or phone”.



Background App Privacy Settings

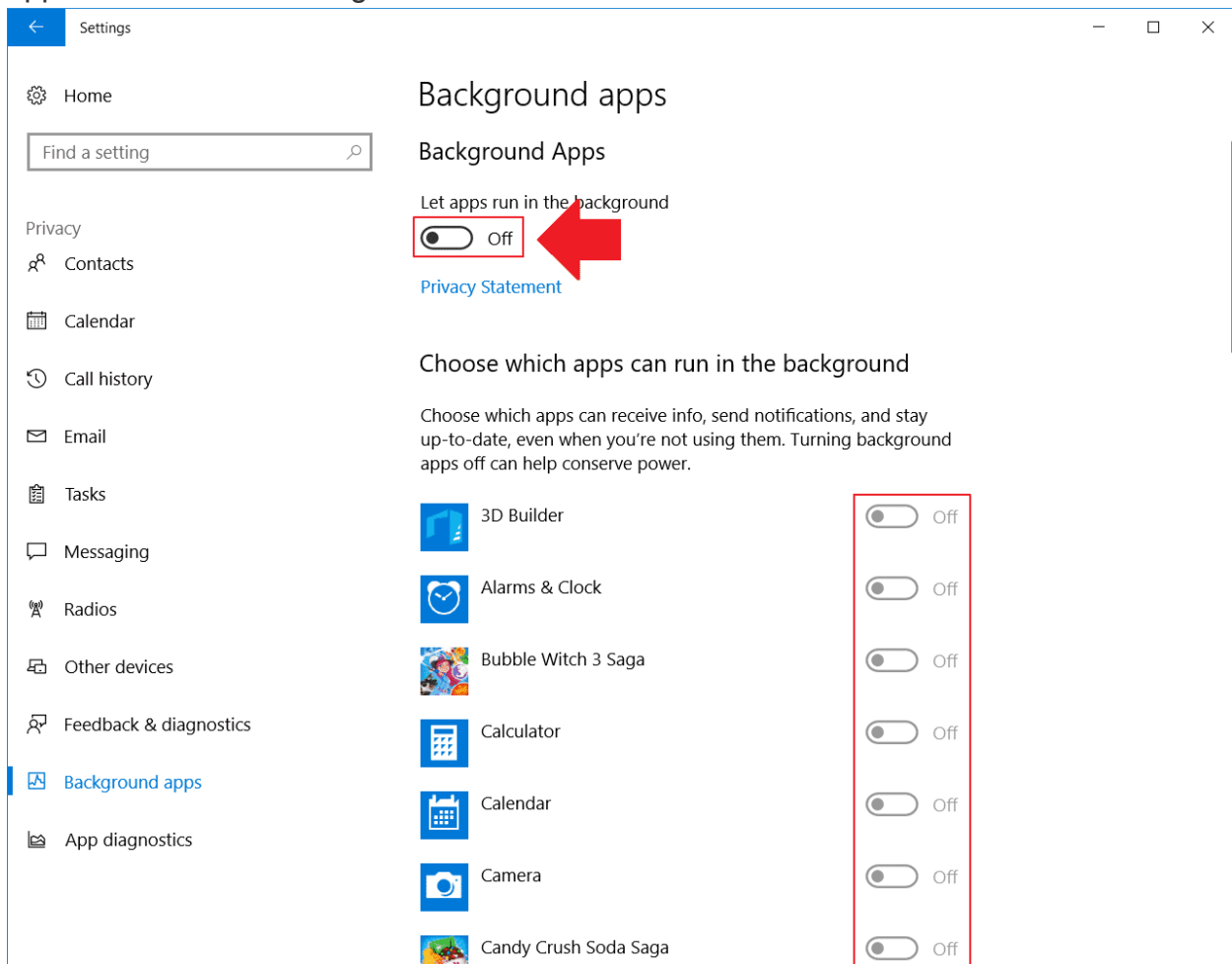
1. Click on Background apps.



The screenshot shows the Windows Settings application. The left sidebar contains various settings categories, with 'Background apps' highlighted in blue and enclosed in a red box. A red arrow points from this box towards the right. The main content area is titled 'Background apps' and includes a search bar, a toggle switch for 'Background Apps' (set to 'On'), a link to the 'Privacy Statement', and a section titled 'Choose which apps can run in the background'. This section contains a list of applications with their respective icons and toggle switches, all of which are currently turned 'On'.

App Name	Status
3D Builder	On
Alarms & Clock	On
Bubble Witch 3 Saga	On
Calculator	On
Calendar	On
Camera	On
Candy Crush Soda Saga	On

2. Turn off “Let apps run in the background” and ensure that apps under “choose which apps can run in the background” are off.



You have completed the Devices and App Privacy settings on your computer. Please click on the “COMPLETE LESSON” button below to indicate that you have completed this lesson so you can go to the next lesson.